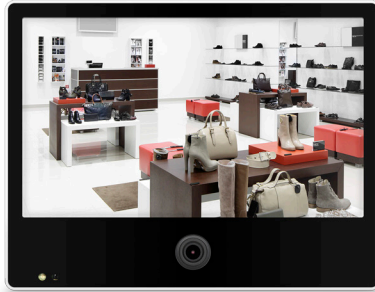


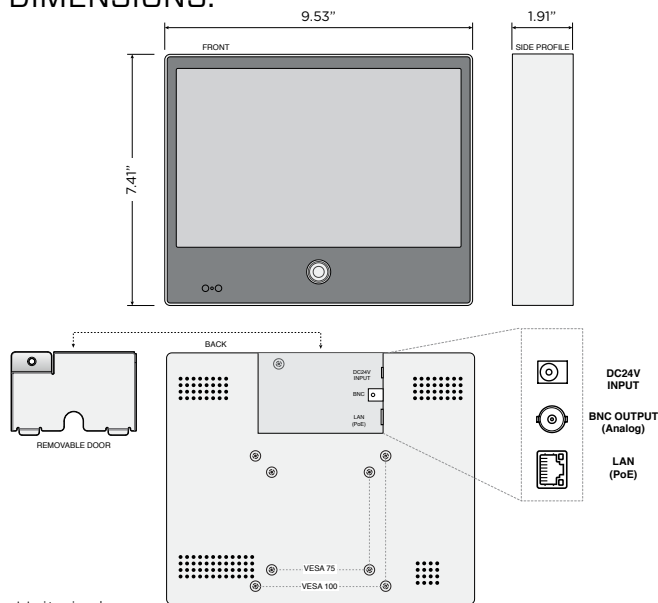
CE-M10A 10" IP Public View Monitor



INFO:

- Built-In 2.8mm (f1.8) Fixed Lens IP Camera
- 1/2.8" 2 MP SONY CMOS Sensor
- 16:9 Aspect Ratio / 1024 x 600 Resolution
- 350 nit Brightness / 500:1 Contrast Ratio
- Steel Cabinet with Acrylic Front
- "RECORDING IN PROGRESS" or "WELCOME" Text Overlay in English or Spanish
- Built-in SD Card Player for Advertising (4GB Card Included)
- H.264 & Motion JPEG Compression
- ONVIF 2.3 & Profile S Compliant
- Flashing LED Light
- 1 RJ45 Ethernet Port
- 1 BNC Output (Analog)
- VESA 75 & 100
- DC24V or 48V PoE (Power Supply Sold Separately)

DIMENSIONS:



SPECIFICATIONS:

MONITOR	
Display	10" TFT LCD
Resolution	1024 x 600
Aspect Ratio	16:9
Display Colors	16M
Brightness	350 nit
Contrast Ratio	500:1
Viewing Angle (H x V)	70° x 70° x 60° x 60°
Response Time	16ms
Mounting	VESA 75 & 100
CAMERA	
Image Sensor	1/2.8" 2 Megapixel SONY CMOS
Lens	2.8mm (f1.8) Fixed Lens
Angle of View	105° Horizontal
VIDEO	
Video Compression	H.264 & Motion JPEG Compression
Resolution	Full HD 1080p (1920x1080)
Frame Rate	30 FPS
SYSTEM REQUIREMENTS	
Minimum Operating System Requirement	Pentium 4 2.8GHz (or equivalent AMD) 256MB RAM graphic cards (or equivalent on-board graphic cards) 1G RAM Window 2000, 2003, XP, Vista or Windows 7 Mac OS Leopard 10.5 or later
GENERAL	
Connectors	1 - 1 BNC (Analog) Video Output 1 - RJ45 Ethernet 10/100 Base-T (PoE)
Power Requirement	DC24V or 48V PoE+ (Power Over Ethernet)
Power Consumption	14 Watts- operating (higher on startup)
48V PoE Power	IEEE 802.3at PoE Class 1
Operating Temperature	32°F - 122°F / -0°C - 50°C
Dimensions (W x H x D)	9.53" x 7.41" x 1.91" 242mm x 188mm x 48.5mm
Weight	3.9 lbs / 1.769 kg
Certifications	CE, FCC, RoHS

RECOMMENDED POWER SUPPLY	
CE-PS200	120W Single Monitor Power Supply (24VDC)
CE-S320-B	320W Multiple Monitor Power Supply (24VDC)
CE-S600-24-B	600W Multiple Monitor Power Supply (24VDC)
CE-PS-201GV2	30W Single Port PoE+ Injector

CERTIFICATIONS:

